



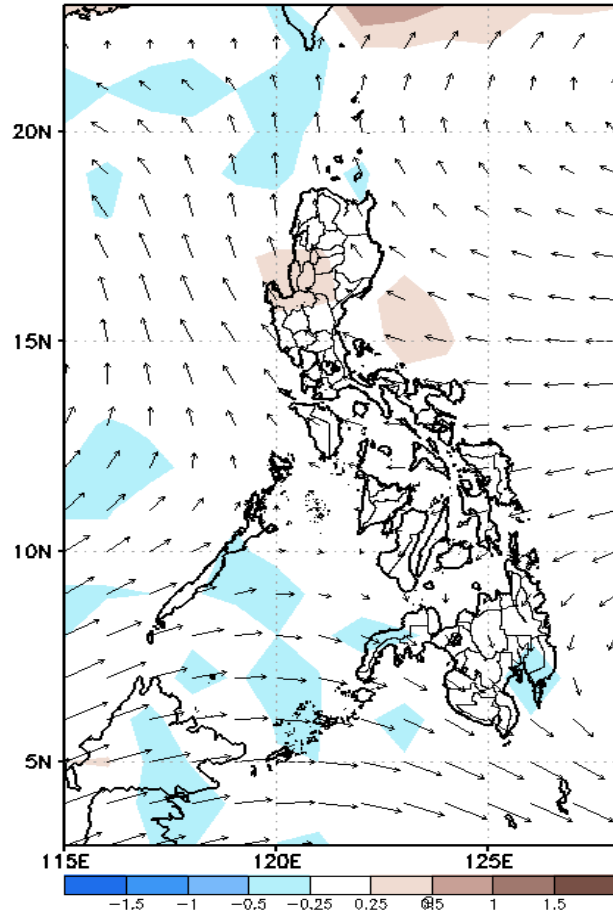
Week 1 & Week 2 Forecast for the Philippines using GEFS Model



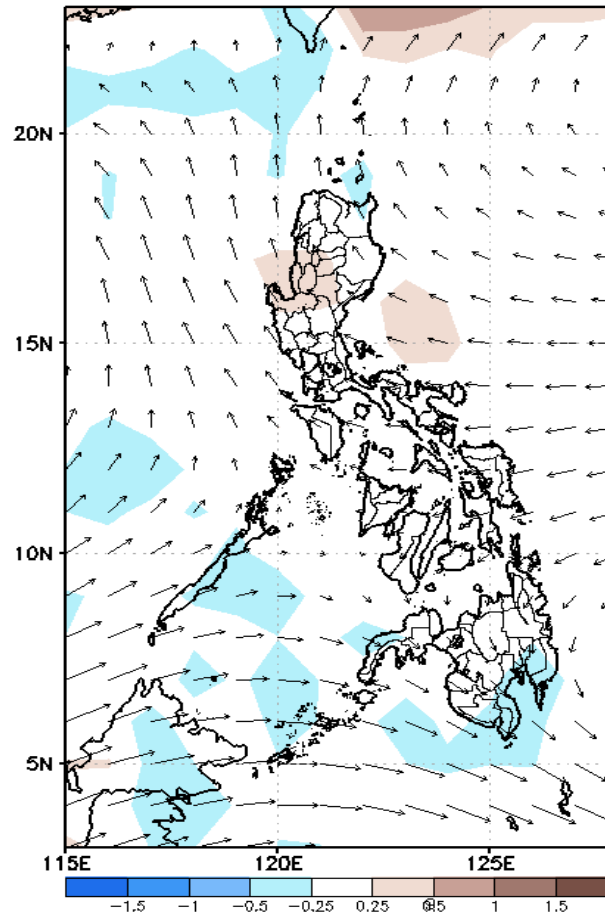
GEFS Week-1 Forecasts: Divergence & Wind Anomaly

Week 2: Apr 29-May 05, 2022

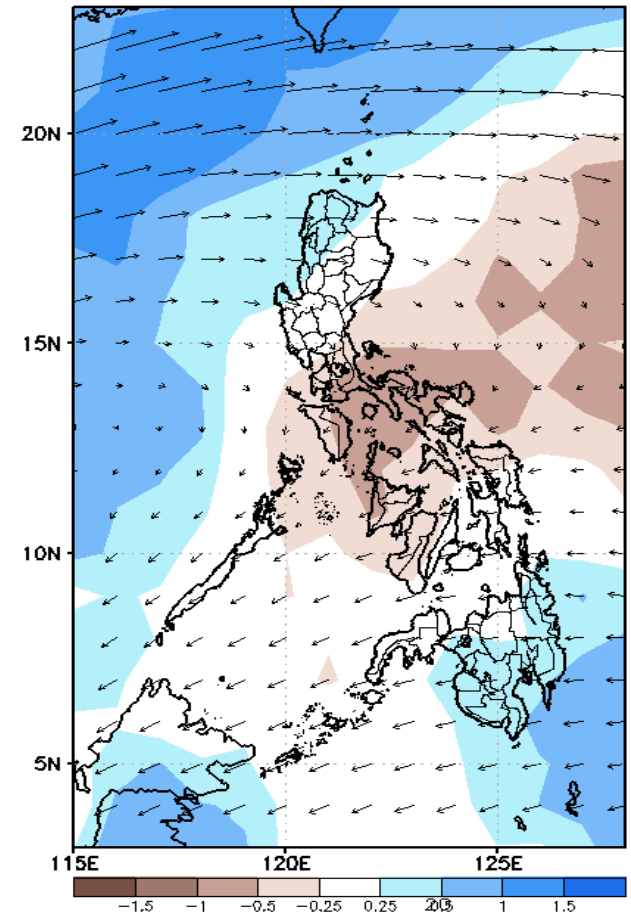
GEFS Week-1 850-hPa Divergence and Wind Anom
Valid: 20220429 - 20220505



GEFS Week-1 700-hPa Divergence and Wind Anom
Valid: 20220429 - 20220505



GEFS Week-1 200-hPa Divergence and Wind Anom
Valid: 20220429 - 20220505

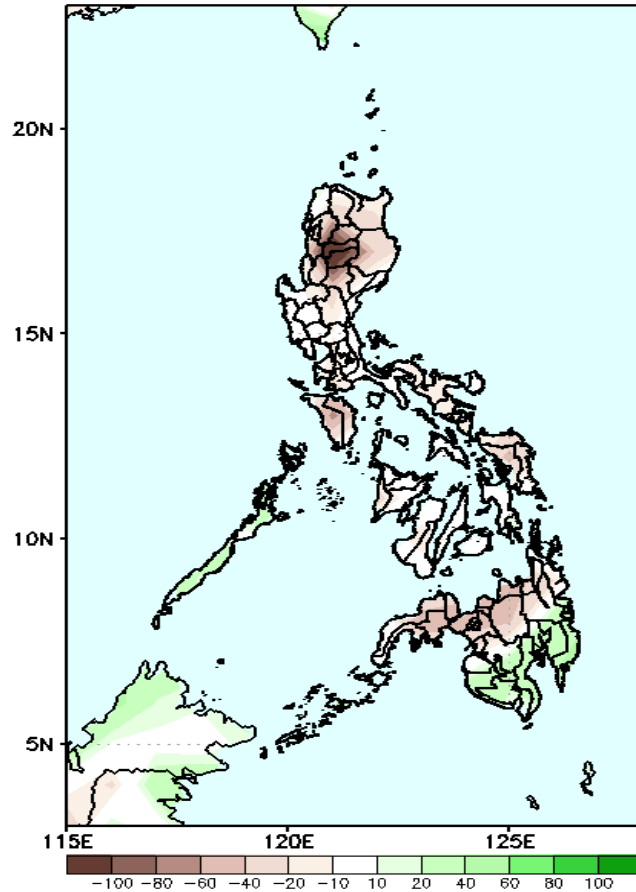


Upper and low level Divergence suggest a likelihood of light to moderate precipitation in Ilocos Region, Apayao and most parts of Mindanao. Easterlies affecting most parts of the country attributing to warmer temperatures during the forecast period.

Precipitation Anomaly and Exceedance Probability > 25/50 mm

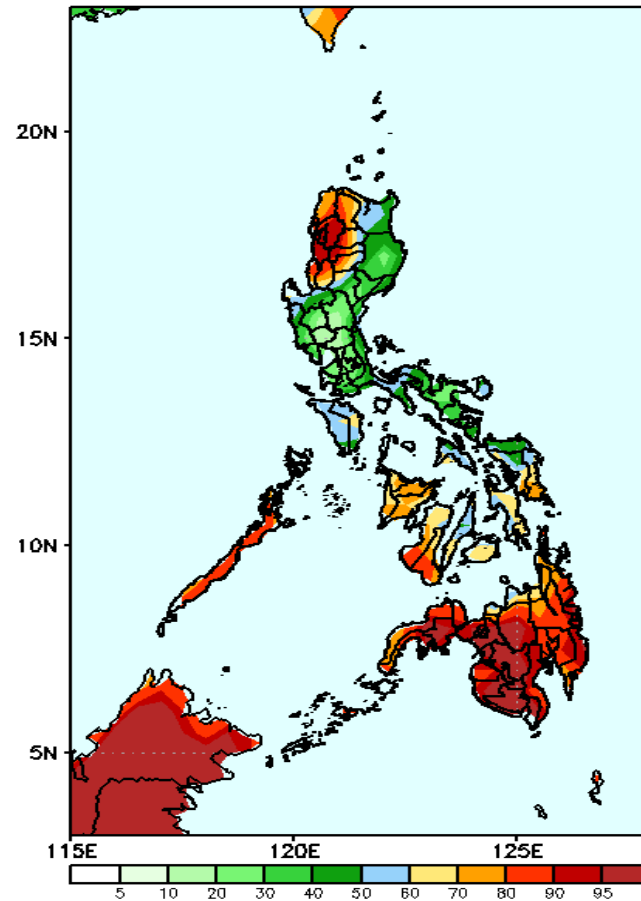
Week 2: Apr 29-May 05, 2022

GEFS Week-1 Precip Anomaly
Valid: 20220429 - 20220505



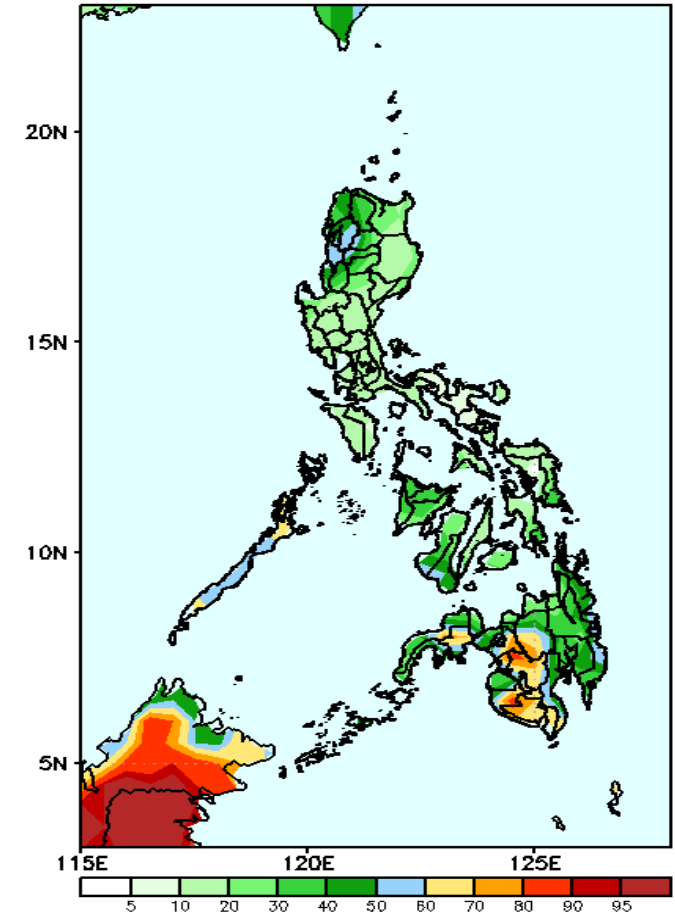
Rainfall deficit of 50-100mm in most parts of the country except in southern Mindanao where there is 40-60mm increase of rainfall during the forecast period.

GEFS Week-1 Exceedance Prob. > 25mm
Valid: 20220429 - 20220505



High probability of rainfall to exceed 25mm in Ilocos & Cordillera Region, Eastern Samar, Bohol, Leyte and most parts of Western Visayas and Mindanao while less likely for the rest of the country during the forecast period.

GEFS Week-1 Exceedance Prob. > 50mm
Valid: 20220429 - 20220505

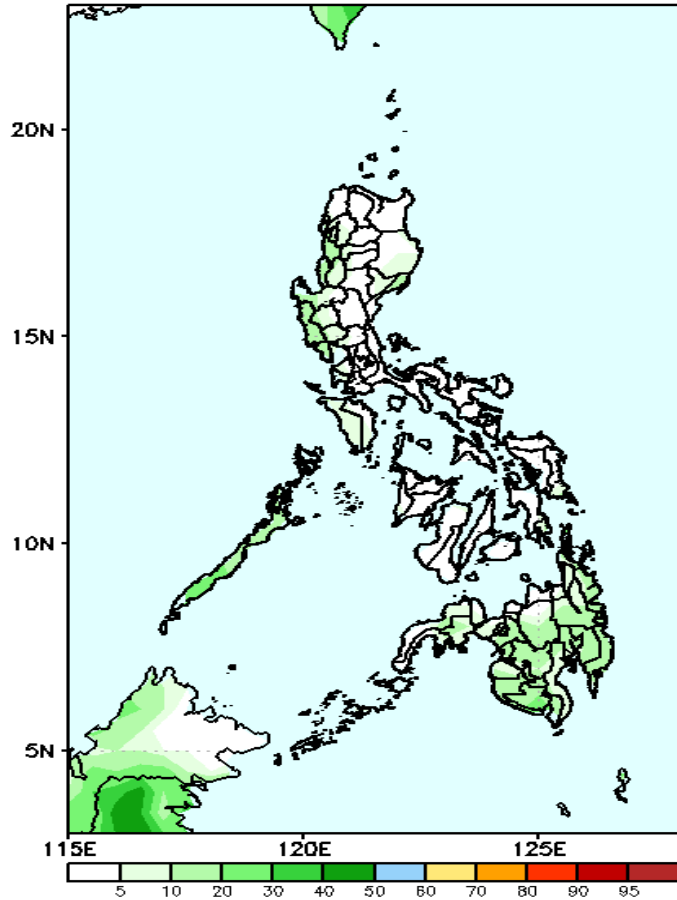


Low probability of rainfall to exceed 50mm in most parts of the country except in western parts of Mindanao where there is 60-90% probability during the forecast period.

Exceedance Probability > 100/150/200 mm

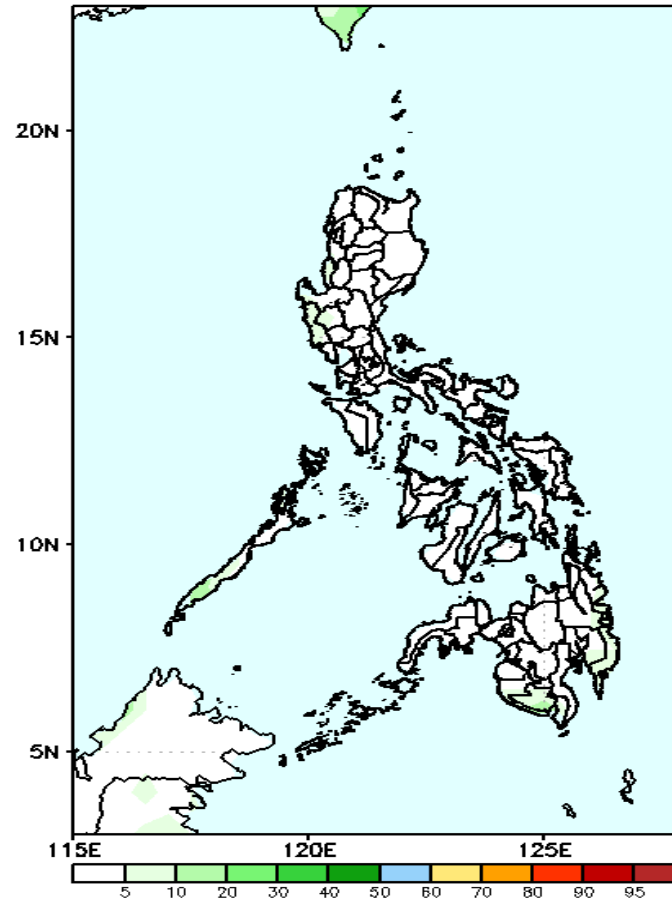
Week 2: Apr 29-May 05, 2022

GEFS Week-1 Exceedance Prob. > 100mm
Valid: 20220429 - 20220505



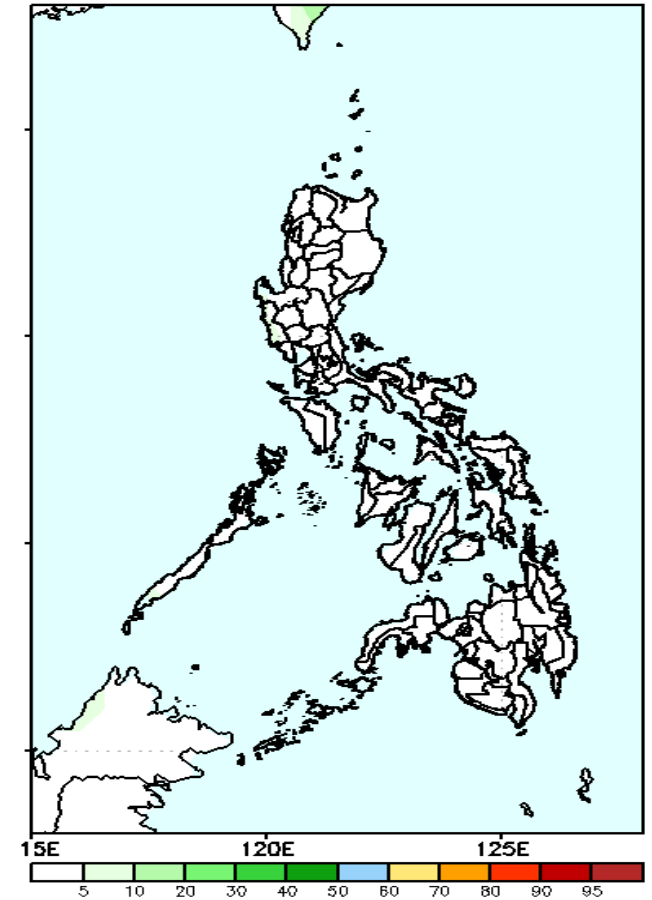
Low probability of rainfall to exceed 100mm in most parts of the country except in Palawan and some areas in Southern Mindanao during the forecast period.

GEFS Week-1 Exceedance Prob. > 150mm
Valid: 20220429 - 20220505



Low probability of rainfall to exceed 150mm in most parts of the country during the forecast period.

GEFS Week-1 Exceedance Prob. > 200mm
Valid: 20220429 - 20220505



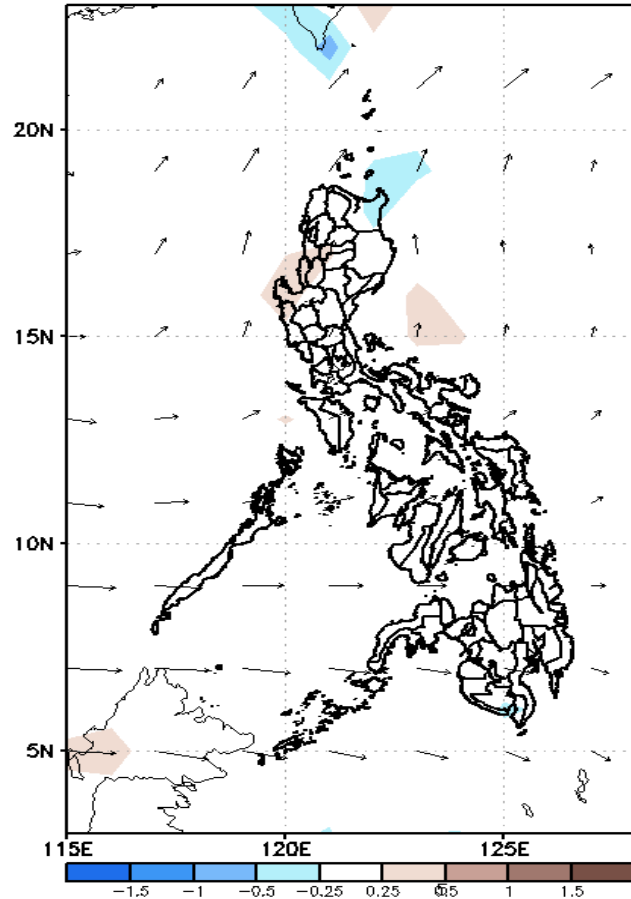
Low probability of rainfall to exceed 200mm in most parts of the country during the forecast period.



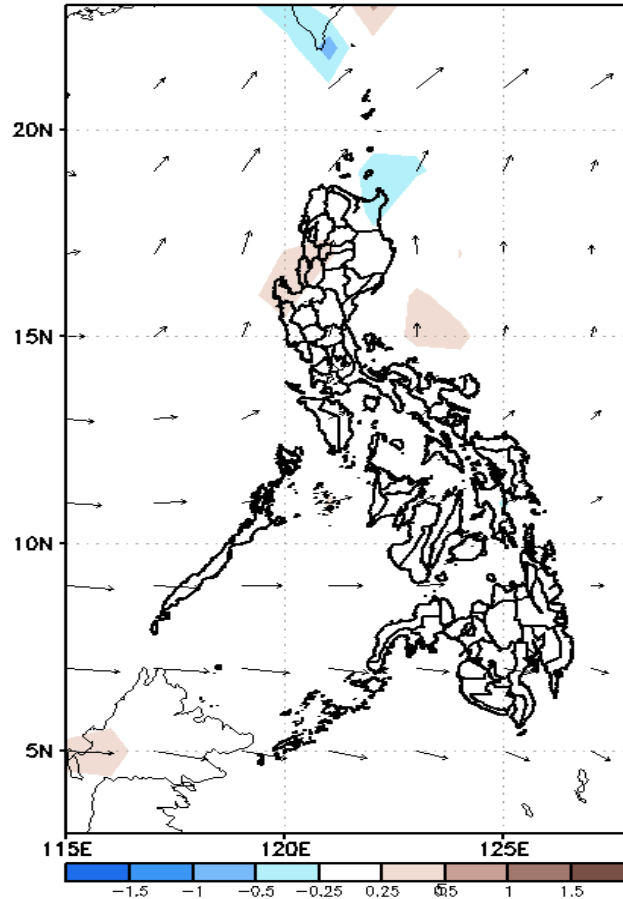
GEFS Week-2 Forecasts: Divergence & Wind Anomaly

Week 2: May 06 - May 12, 2022

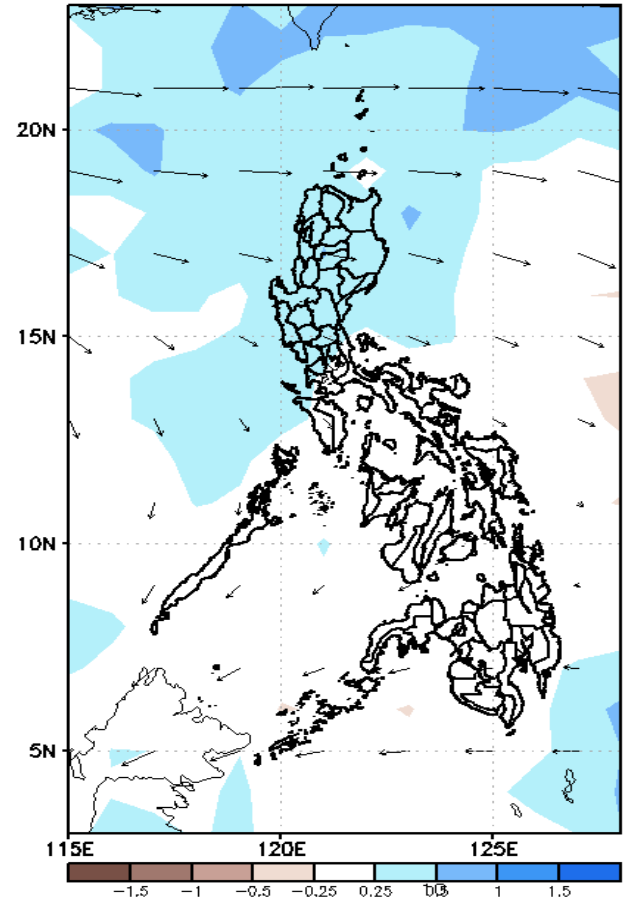
GEFS Week-2 850-hPa Divergence and Wind Anom
Valid: 20220506 - 20220512



GEFS Week-2 700-hPa Divergence and Wind Anom
Valid: 20220506 - 20220512



GEFS week-2 200-hPa Divergence and Wind Anom
Valid: 20220506 - 20220512

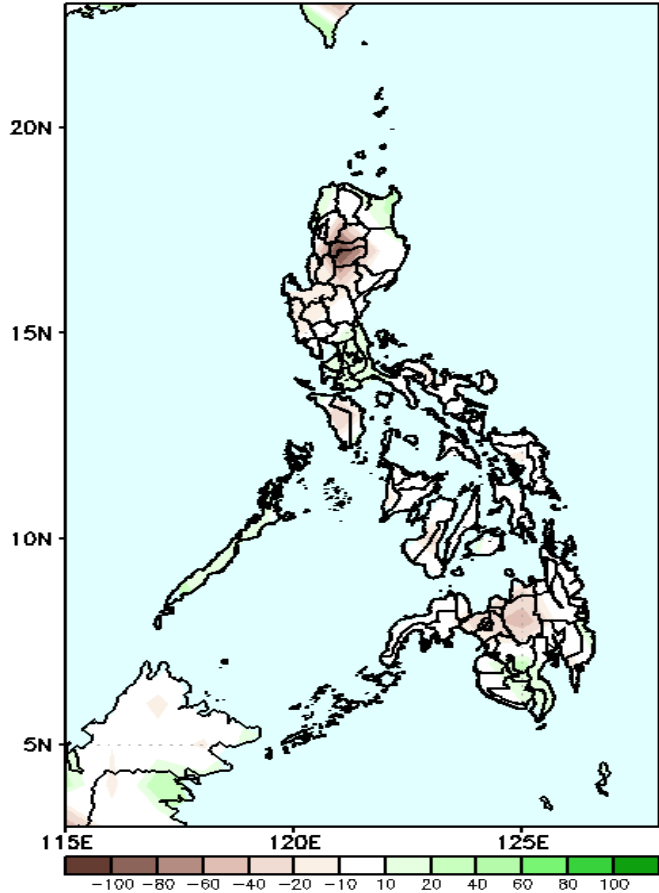


Upper and low level Divergence suggest a likelihood of light precipitation in most parts of Northern and Central Luzon. Easterlies affecting most parts of the country attributing to warmer temperatures during the forecast period.

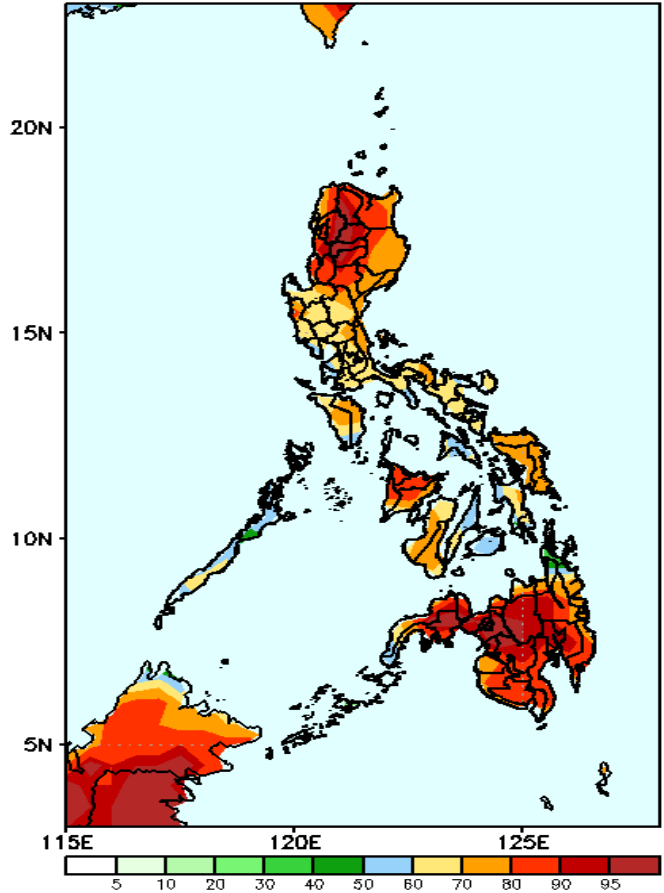
Precipitation Anomaly and Exceedance Probability > 25/50 mm

Week 2: May 06 - May 12, 2022

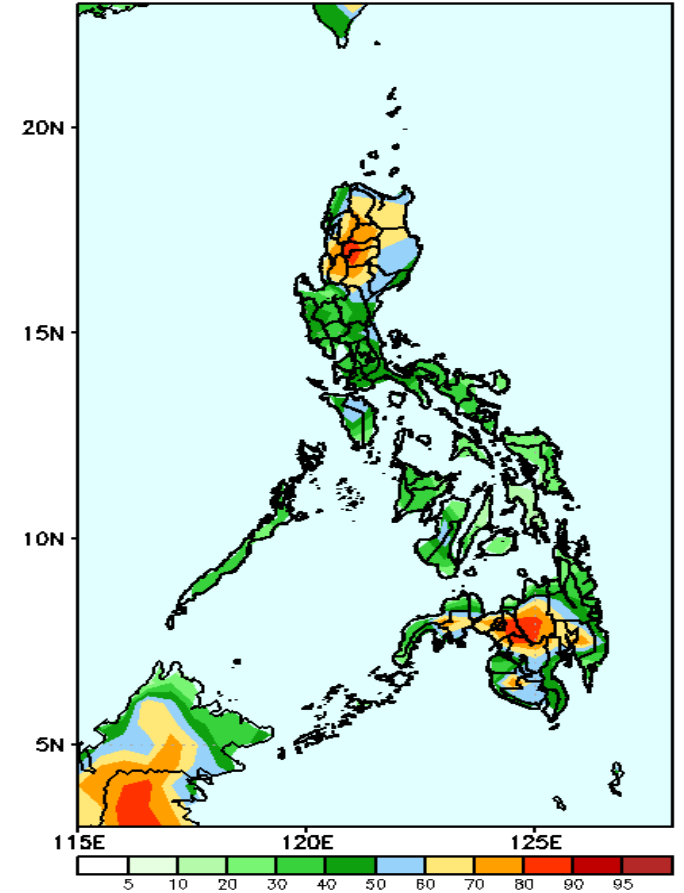
GEFS Week-2 Precip Anomaly
Valid: 20220506 - 20220512



GEFS Week-2 Exceedance Prob. > 25mm
Valid: 20220506 - 20220512



GEFS Week-2 Exceedance Prob. > 50mm
Valid: 20220506 - 20220512



Rainfall deficit of 20-50mm in most parts of the country and up to 90mm in Cordillera Region during the forecast period.

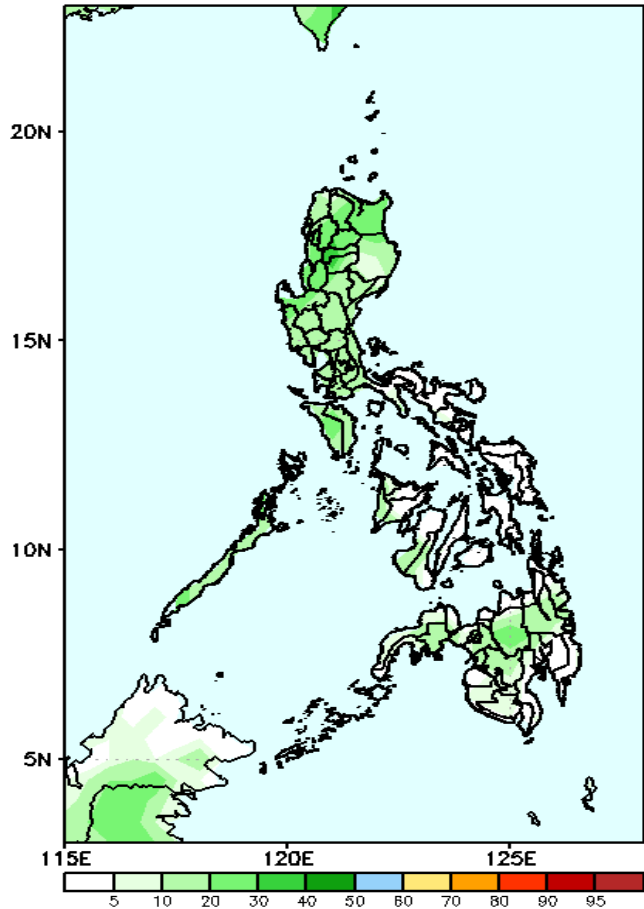
High probability of rainfall to exceed 25mm in most parts of the country during the forecast period.

High probability of rainfall to exceed 50mm in most parts Northern Luzon and Central Mindanao while less likely for the rest of the country during the forecast period

Exceedance Probability > 100/150/200 mm

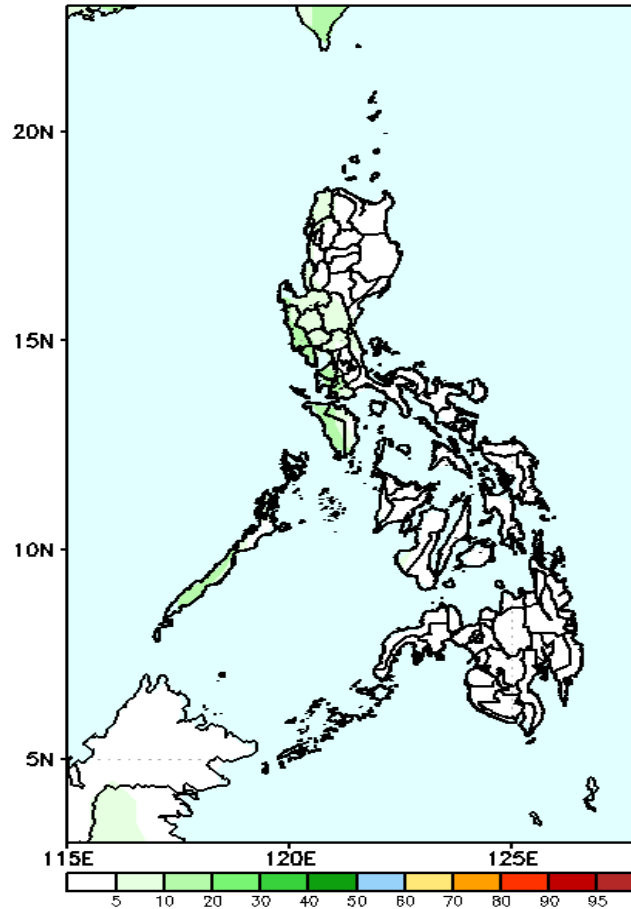
Week 2: May 06 - May 12, 2022

GEFS Week-2 Exceedance Prob. > 100mm
Valid: 20220506 - 20220512



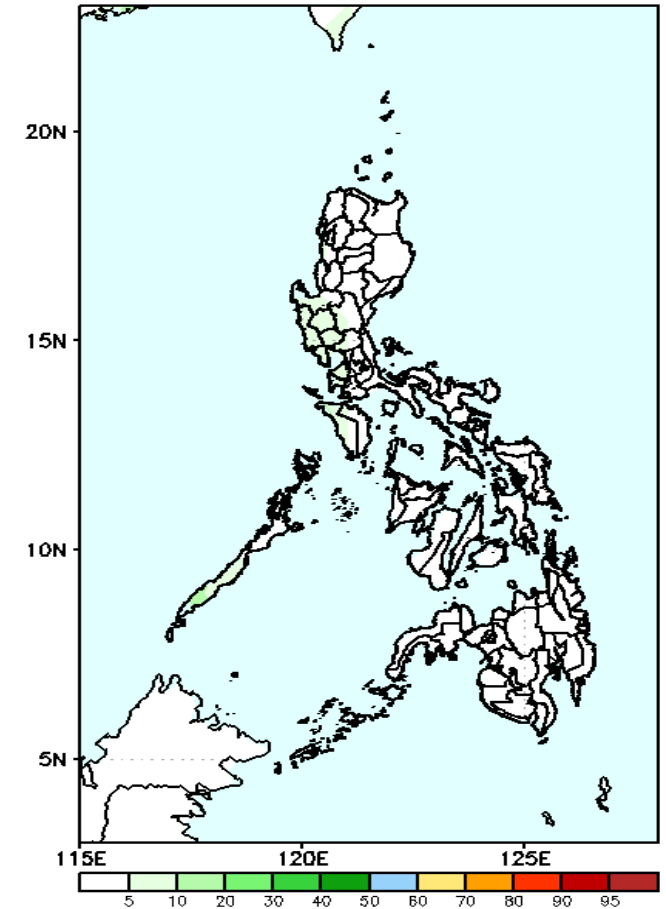
Low probability of rainfall to exceed 100mm in most parts of the country during the forecast period.

GEFS Week-2 Exceedance Prob. > 150mm
Valid: 20220506 - 20220512



Low probability of rainfall to exceed 150mm in most parts of the country during the forecast period.

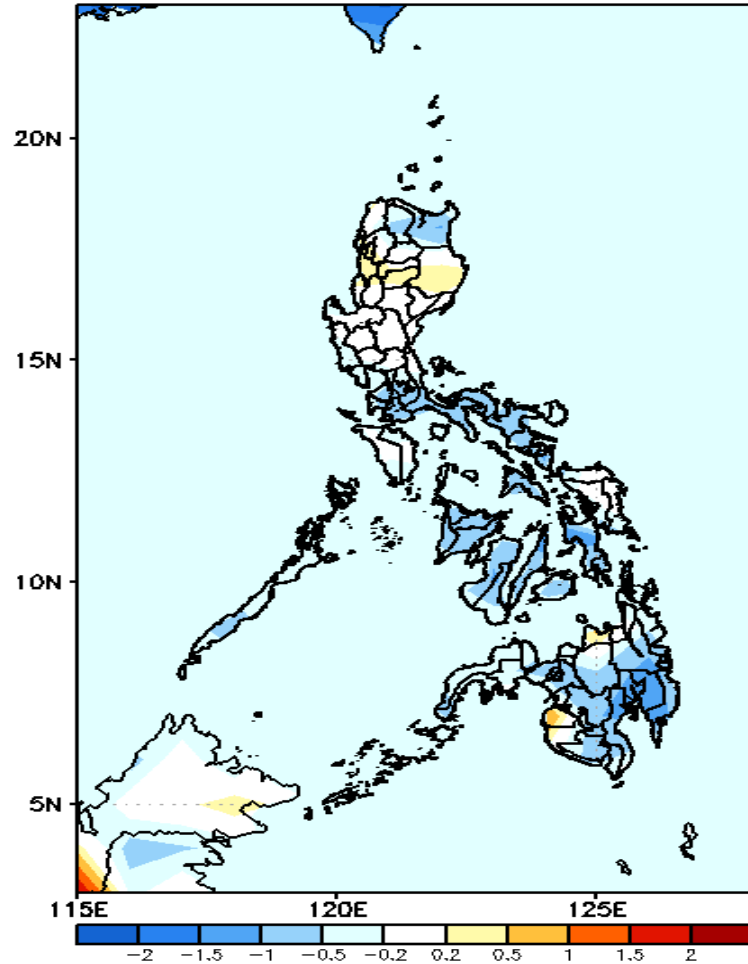
GEFS Week-2 Exceedance Prob. > 200mm
Valid: 20220506 - 20220512



Low probability of rainfall to exceed 200mm in most parts of the country during the forecast period.

GEFS Week-1 & 2 Forecasts: T2m Anomaly

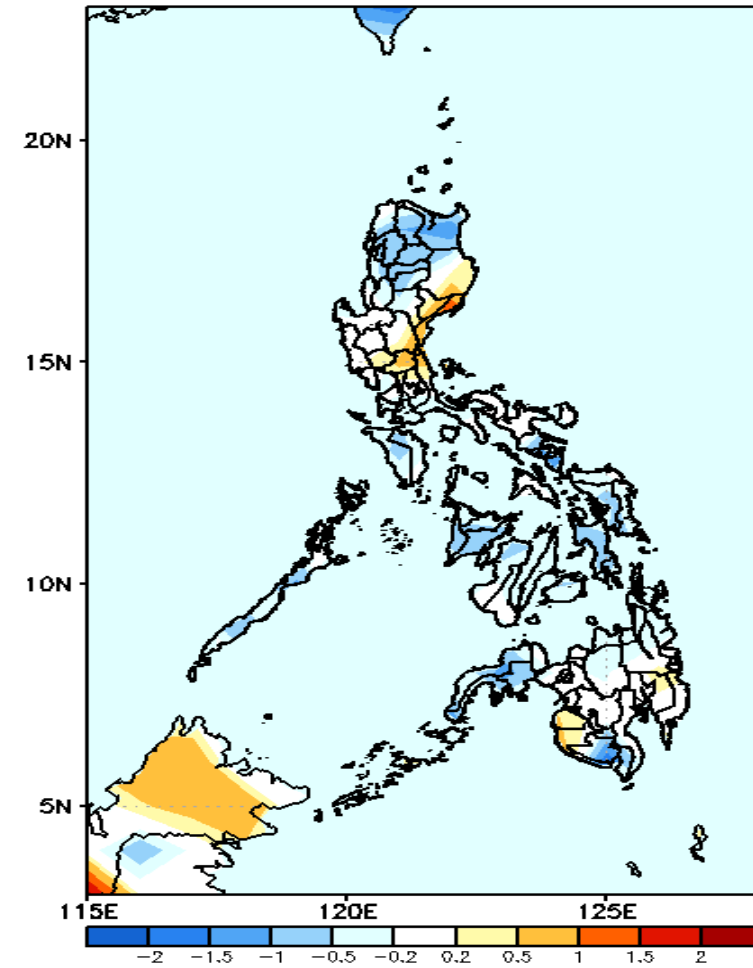
GEFS Week-1 T2m Anomaly
Valid: 20220429 - 20220505



2m Temperature Week 1: Apr 29-May 05, 2022

Slightly cooler to cooler than average surface air temperature will likely experience in most parts of the country except in Isabela, Ilocos & Cordillera Region, Central Luzon, Mindoro, Samar provinces, Maguindanao and Misamis oriental where average to slightly warmer temperature is expected during the forecast period.

GEFS Week-2 T2m Anomaly
Valid: 20220506 - 20220512



2m Temperature Week 2: May 06 - May 12, 2022

Slightly cooler to cooler than average surface air temperature will likely experience in most parts of Northern Luzon and most parts of Visayas, Zamboanga Peninsula and Sultan Kudarat while average to slightly warmer temperature for the rest of the country during the forecast period.